



**ENNEREV<sup>®</sup>**  
**X**TRA

**Rest and sleep  
are fundamental  
pillars for the physical,  
mental and emotional  
well-being of every  
individual.**

**A new technical and sophisticated line, designed and created to meet the needs of those who have a sporty and dynamic lifestyle.**

2



3



**The exceptional ambassador for this project is Riccardo Pittis: former international basketball player, now a motivational speaker and mental coach.**



## Rest, Wellness, and Performance.

These are the three key words that define the new Xtra line, whose products are designed to meet the needs of athletes and those who lead an active and dynamic lifestyle, with the aim of actively influencing the performance and psycho-physical well-being of each individual.

*“I've always believed that achieving success requires a careful choice of mattress to promote optimal rest both physically and mentally.”*

Riccardo Pittis

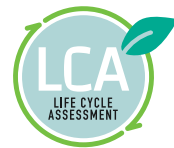
A handwritten signature in black ink, appearing to read 'RP Pittis'.

The Xtra line offers two different product versions designed to optimize recovery and maximize performance.

The independent spring technology and the new evolved foam, combined with memory foam, are coupled with natural yarns that allow for body breathability and, at the same time, are protected by the Clean Sleep Guaranteed hygiene assurance and the anti-dust mite Clean & Fresh treatment.

Xtra is also certified 100% Made in Italy.

6



Class 1  
Medical Device

7





## XTRA Navy Blue

The refined Navy Blue cover highlights the innovative details of the fabric, giving the product an ergonomic and essential shape. Made of polyester and viscose fabric, this combination offers an unprecedented feeling of freshness and softness to the touch. Xtra mattresses are also characterised by a 3D Air System insert along the entire perimeter band, ensuring excellent ventilation and breathability of the internal structure.



10

11



A removable cover designed to express dynamism and strength, featuring a carefully embroidered detail at the center of the panel. The mattress is defined by a continuous design that extends to the perimeter band, wrapping it completely and making it an elegant and refined product. Xtra stands out from classic models because it is a range of products with a high level of technical sophistication and quality.





## XTRA Solid White

In the Solid White version, the Xtra mattress stands out with its timeless classic look thanks to the precisely stitched detail on the sleeping surface, which adds vigor and vitality. The padding, made with cutting-edge materials, and the breathable removable viscose cover are two fundamental elements that make the Xtra mattress the ideal support for promoting recovery after physical activity.

14



15



16

17



The extremely soft and flexible fabric, embellished with silver threads for a touch of refinement and brightness, represents excellence in workmanship and aesthetics. Along the perimeter, the 3D Air System insert ensures effective ventilation of the mattress and facilitates the release of body moisture.

PLUS

---

**A complete line designed to promote physical recovery and ensure quality rest.**



20

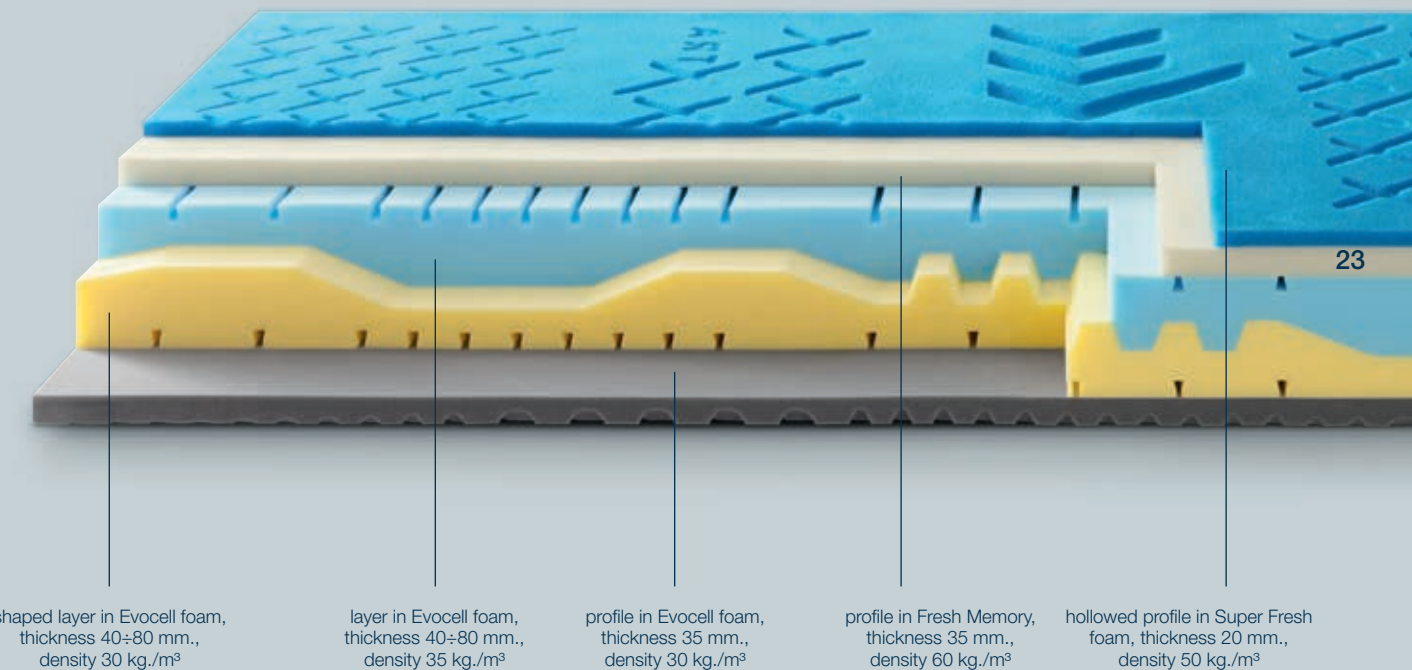
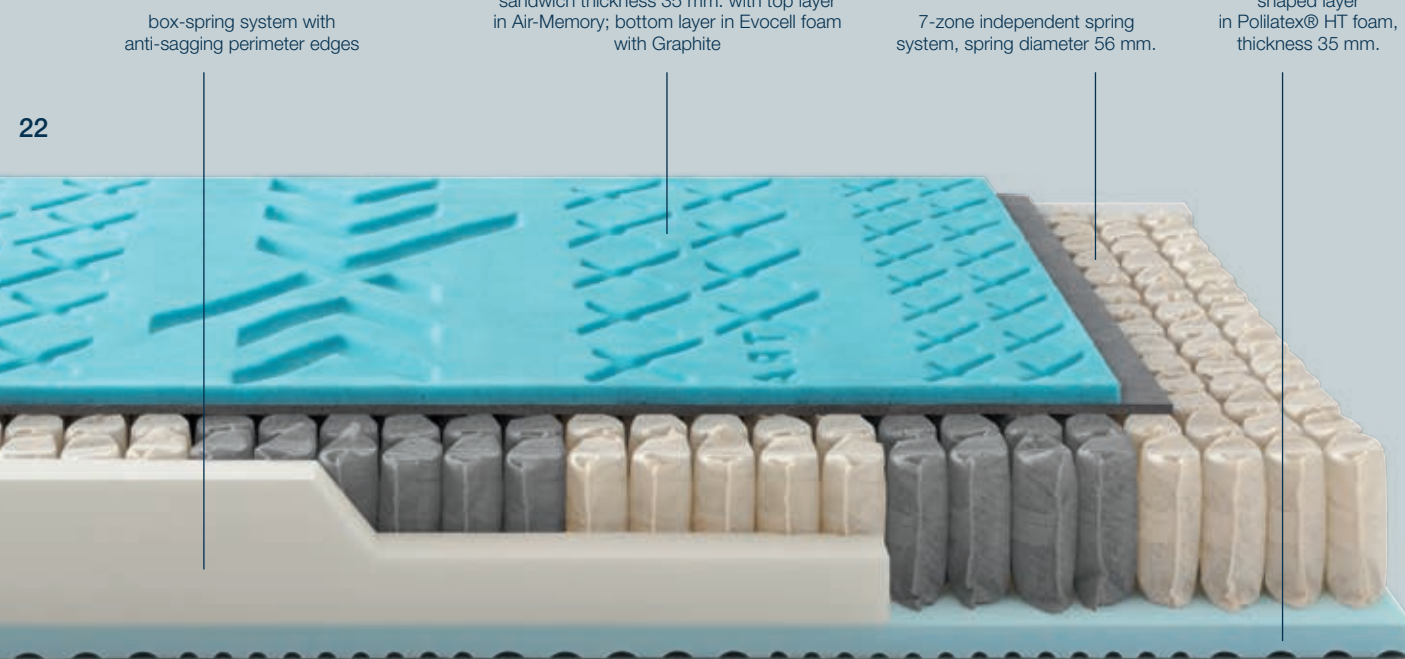
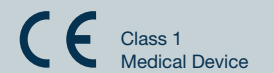


21

The Xtra line offers a cutting-edge set composed of the mattress, topper, and pillows designed to provide excellent comfort. Xtra can be customized with two color versions, Navy Blue and Solid White, and two different types of structures: independent springs with Super Firm support or advanced foam with Firm support.

The Xtra-Tech mattress has a structure of 1000 7-zone independent springs, Super Firm for balanced support that promotes optimal distribution of body weight.

The Xtra-Pure mattress has Firm support and is manufactured with a 5-layer foam structure with different properties. It has 9 zones of different bearing capacity providing perfect support at every stage of rest.

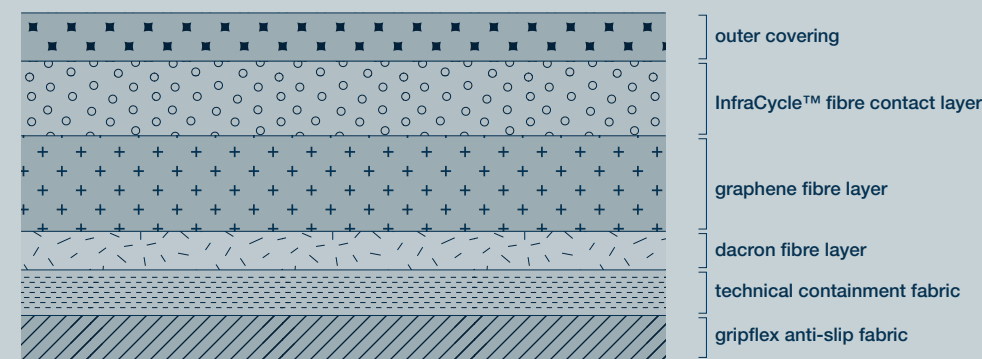


The bottom layer in Polilatex® HT facilitates relaxation and avoids harmful muscular compression, while the top profile consists of an advanced sandwich of Evocell and Graphite combined with an Air-Memory layer with breathable gel that gives a feeling of freshness and helps eliminating pressure points for a regenerative rest. The structure has a box system on all four sides that gives the mattress solidity and optimal containment of the springs, giving the perception of support in movement during sleep.



The top layer is made of a Super Fresh foam profile and a Fresh Memory profile containing gel microcapsules, which ensure high breathability, providing a sense of freshness and enhancing the dispersion of heat and moisture. The use of high densities and the combination of highly technical and refined materials of different thicknesses allows for optimal weight distribution both vertically and horizontally. Every detail is meticulously crafted, such as the processing of the foam layer within the mattress structure, conveying the distinctive essence that characterizes the Xtra line.

The Xtra line features the exclusive Comfort-Tech padding, made with cutting-edge materials of three different types.



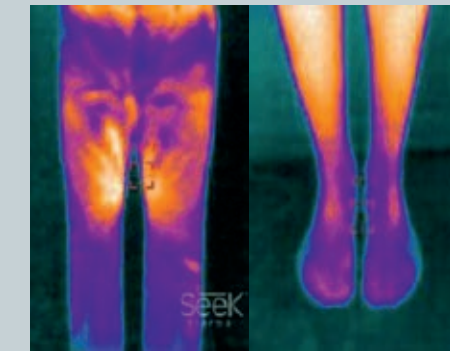
machine washable  
**60°**  
gentle

Fabric of 380 g./m<sup>2</sup> - 85% PES - 15% CV

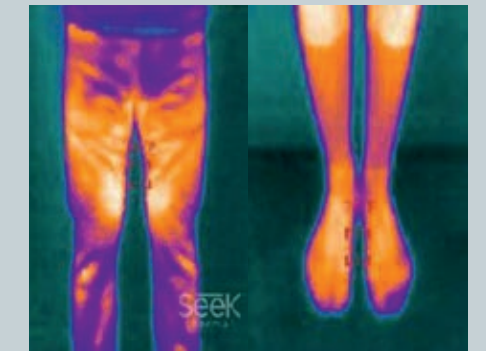
INFRA CYCLE™

**InfraCycle™**, an innovative fibre that promotes oxygenation of body tissues and physical recovery.

Regular garments



Garments with InfraCycle™ Fibre



InfraCycle™ fibre uses infrared technology to evenly distribute heat across the entire body, promoting blood circulation. It contains natural minerals that, by maximizing infrared emissions, react with the energy naturally produced by our body and thus support thermoregulation.

HONEYCOMB X™

**Graphene**, with anti-bacterial properties that guarantees thermoregulation by preventing the formation of localised heat spots.

Graphene fibre has long-lasting conductive properties, capable of transferring heat emitted by the body to the outside and maintaining the ideal temperature in any resting condition. Lastly, thanks to the carbon present inside, this fibre can reduce bacterial proliferation and prevent the formation of odors.



**Dacron**, an anti-bacterial material that facilitates the evaporation of moisture, released by the body during sleep, giving a stable and long-lasting support as it maintains its shape and resilience over time.



The Xtra topper is designed to offer greater comfort and softness with its 5 cm. height in pure Air-Memory.

CE Class 1 Medical Device

28



29

The cover, made with polyester and viscose fabric, contains a layer of Air-Memory foam with highly breathable gel microcapsules to provide support and facilitate excellent physical recovery. Available in the same shades as the mattress, Navy Blue and Solid White, the topper Xtra features elastic bands at the corners for easy positioning, ensuring a restful and safe sleep. The removable cover, thanks to the convenient zipper on three sides, is washable at 60° on a delicate cycle.

machine washable  
60°  
gentle







## The ergonomic Dual Memo 100 pillow completes the Xtra line set.

CE Class 1  
Medical Device

It features two sides: the first in Air-Memory, which helps to wrap and support the neck, and the second in soft, elastic, and breathable eco-friendly foam. The elegant pillowcase is made with two fabric combinations: one part in stretchy Tencel fabric, and the other in polyester and viscose, the same used in the mattress cover. Available in Xtra line refined colors - Navy Blue and Solid White - the pillow is easily removable from its case, which is machine washable at 40° on a delicate cycle.

machine  
washable  
**40°**  
gentle



## GENERAL CONDITIONS OF SALE

By placing an order the following General Conditions of Sale are taken as accepted without the need to specifically express this.

### Orders

Orders are always dependent on the "subject to approval by the company" clause. Orders with requested delivery beyond 60 days will be processed applying the price list in place at the time of shipment, unless otherwise agreed upon in writing by the company Mita Srl. We do not accept cancellations of orders for custom-made items.

### Prices

The prices in this pricelist are expressed in Euro and are to be considered exclusively as a basis for calculation on which to apply the commercial discount conditions reserved for the reseller. They do not constitute an offer, are provisional and may be changed without prior notice due to increases in raw materials, labour costs and anything else that may occur in an unforeseeable manner. Prices are per delivery to the retailer.

### Products

The descriptions and technical specifications of the products mentioned in this pricelist are purely indicative and not binding. The company Mita Srl reserves the right to change them without prior notice. Product measurements are expressed in centimetres. The company Mita Srl guarantees the most precise measurements possible, although it does reserve a tolerance of 2 cm more or less in width, length and height. All measurements are made with reference to the UNI EN 1334 standard.

### Delivery

The delivery of the ordered goods shall be carried out as quickly as possible according to stock and production availability. Any delivery terms included in the order shall not be considered binding. Non-delivery or delayed delivery of goods, even if agreed, or due to circumstances beyond our control shall not constitute any right for the customer or others to claim compensation for damages or otherwise. Goods, regardless of the form of shipment, shall travel at the risk of the purchaser. For amounts of less than EUR 300.00, a net lump sum of EUR 30.00 shall be charged on the invoice for transport. We do not deliver to private individuals. Delivery is FCA Volpago del Montello (Incoterms 2020).

### Complaints

Complaints for shortages, non-conformities and obvious defects of the goods must be reported in writing immediately upon delivery and in any case within 8 days from receipt of the goods, otherwise this right shall be forfeited.

### Product suitability warranty

Hidden defects on the product are covered by the warranty in accordance with the law (LD no. 206 of 06 September 2005); excluding defects caused by improper use of the product (e.g. broken handles, tears in the fabric, stains of any kind, mould, etc.) or defects caused by an obvious failure to comply with the maintenance instructions set out in the specific documentation. The guarantee in accordance with the law shall run from the date of purchase, which must be documented by the receipt, invoice or fiscal receipt.

### Returns

We do not accept returns of goods unless expressly authorised in writing by the company Mita Srl. Goods approved for return must arrive at the company with suitable packaging and carriage paid. Otherwise the return, even if authorised, will not be accepted.

### Payments

All payments shall be considered valid if made directly to the company Mita Srl. Failure to comply with the terms of payment shall result in the debtor being placed in default with the charging of interest at current bank rates and the recovery of any currency discounts. If deferred payment is agreed, ownership of the goods shall be deemed to be retained by the company Mita Srl.

### Validity

This pricelist is valid from 01/07/2024. It cancels and replaces the previous one. The company Mita Srl shall not be liable for any printing errors relating to prices, measurements, technical characteristics, etc. indicated in this pricelist.

### Place of jurisdiction

For any action or dispute the Court of Treviso shall have exclusive jurisdiction.



**ENNEREV®**

Via Schiavonesca Nuova 22  
31040 Volpago del Montello TV  
tel. +39 0423 620521  
info@ennerev.it

Concept & Graphic Design  
Design Associati

Photo e render  
Fotografica

Styling  
Patrizia Toffolo

Printing  
Grafiche Antiga

[www.ennerev.it](http://www.ennerev.it)